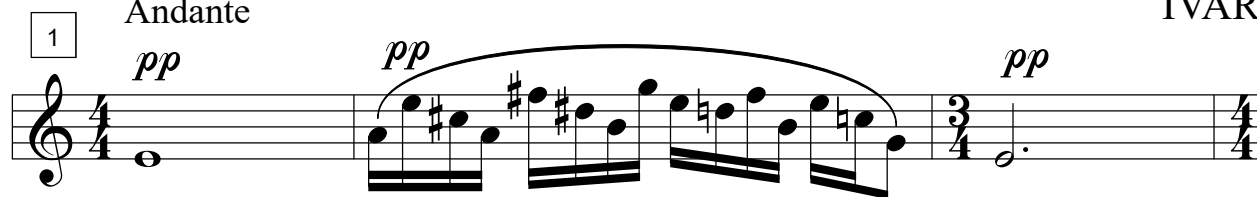


3. THE FOREST

Cornet in Bb

Andante

IVAR



Cornet in Bb

25 *mf* *pp* Horn

28 *p* *mf*

31 *pp*

33 *p*

35 *mp* *p*

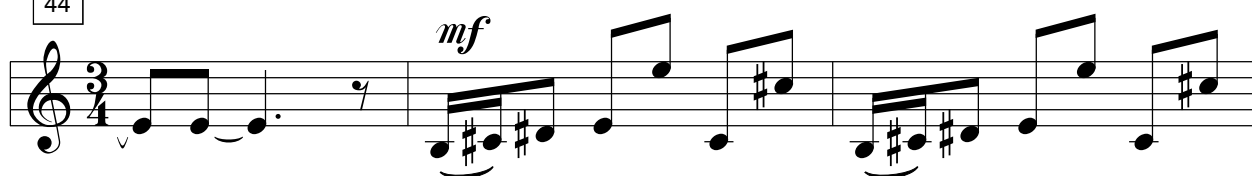
38

Cornet in Bb

41



44



47



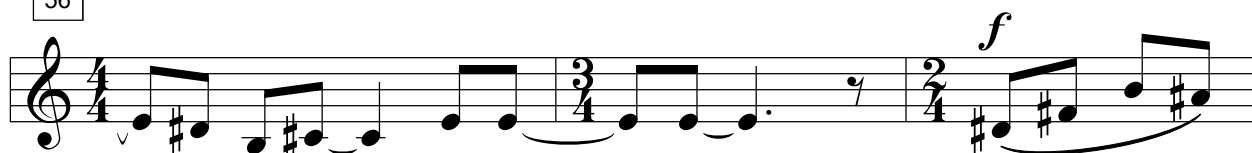
50



53



56



Cornet in Bb

59

62 *f*

64 *pp*

68 *mf*

72 *mf*

77 *p* *pp*

The musical score for the Cornet in Bb part consists of six systems of music. The first system (measures 59-61) features a melodic line with a slur. The second system (measures 62-63) begins with a forte (*f*) dynamic and includes a complex rhythmic pattern with a 3/16+8/4 time signature. The third system (measures 64-65) starts with a pianissimo (*pp*) dynamic and includes a triplet of eighth notes. The fourth system (measures 66-67) features a mezzo-forte (*mf*) dynamic and includes a triplet of eighth notes. The fifth system (measures 68-69) continues with a mezzo-forte (*mf*) dynamic and includes a triplet of eighth notes. The sixth system (measures 70-71) features a mezzo-forte (*mf*) dynamic and includes a triplet of eighth notes. The seventh system (measures 72-73) features a mezzo-forte (*mf*) dynamic and includes a triplet of eighth notes. The eighth system (measures 74-75) features a piano (*p*) dynamic and includes a triplet of eighth notes. The ninth system (measures 76-77) features a pianissimo (*pp*) dynamic and includes a triplet of eighth notes.

Cornet in Bb

81

Tuba

p

87

energico

mp

91

pp

The musical score for the Cornet in Bb part consists of three staves. The first staff, starting at measure 81, is in 3/4 time and features a treble clef, a key signature of one flat (Bb), and a 3-measure rest. The second staff, starting at measure 87, is in 3/4 time and features a treble clef, a key signature of one flat, and a half note G2. The third staff, starting at measure 91, is in 3/4 time and features a treble clef, a key signature of one flat, and a half note G2. The score ends with a double bar line.