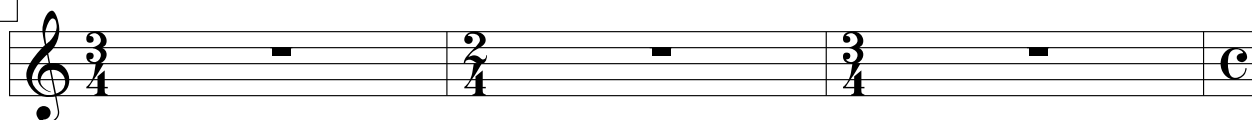


♩ = c. 100

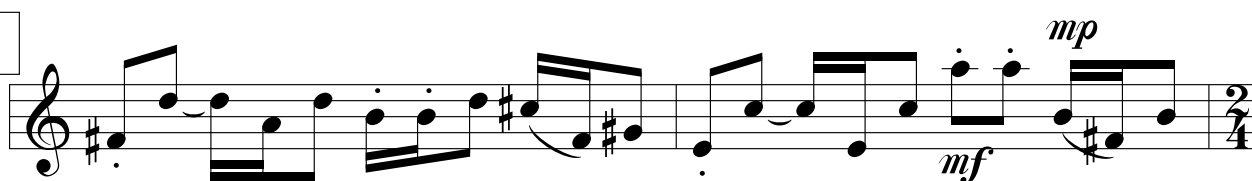
1



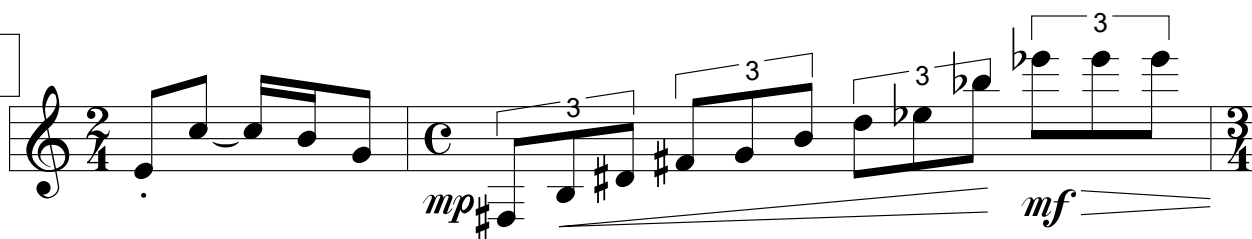
4



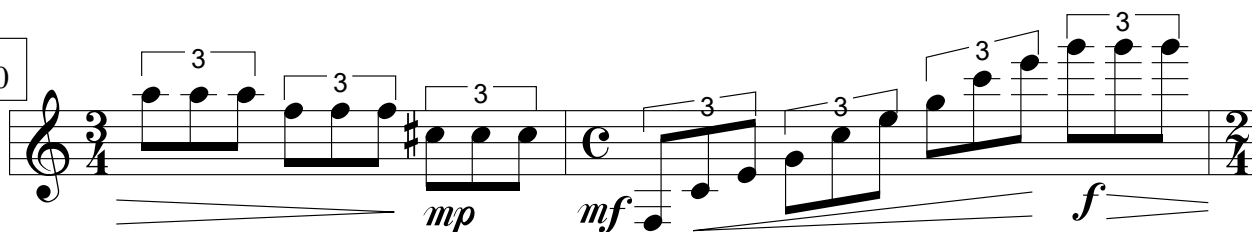
6



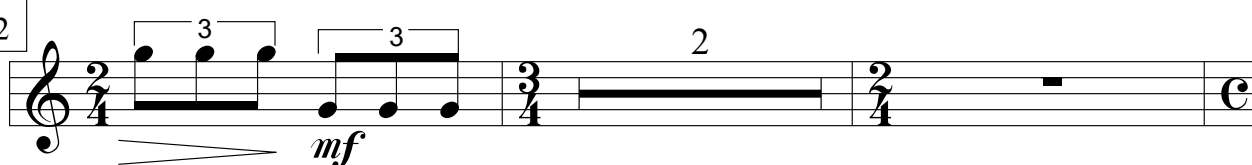
8



10



12



16



Bass Clarinet in Bb

19 *ff*

21 *mp*

23

26 *mf* *f* *pp*

The musical score for the Bass Clarinet in Bb part consists of four staves. The first staff (measures 19-20) is in common time (C) and features a melodic line with a forte (ff) dynamic. The second staff (measures 21-22) is in common time (C) and features a melodic line with a mezzo-piano (mp) dynamic. The third staff (measures 23-24) is in common time (C) and features a melodic line with a mezzo-forte (mf) dynamic. The fourth staff (measures 25-26) is in common time (C) and features a melodic line with a mezzo-forte (mf) dynamic, followed by a crescendo to forte (f) and then a piano (pp) dynamic. The score includes various musical notations such as notes, rests, and dynamic markings.