

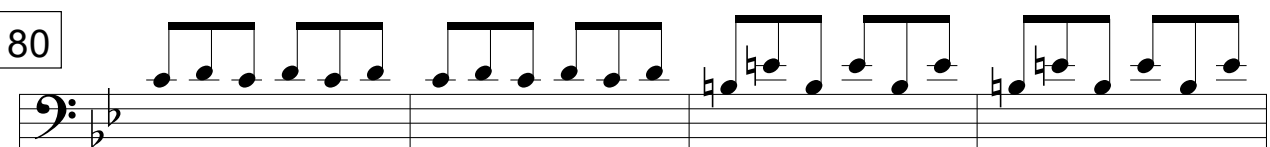
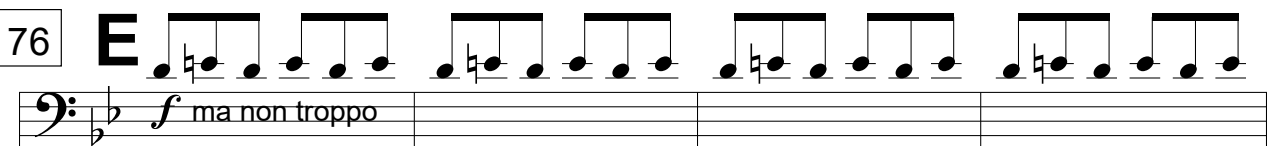
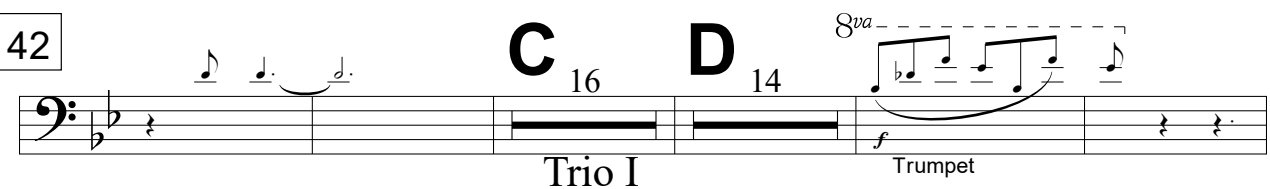
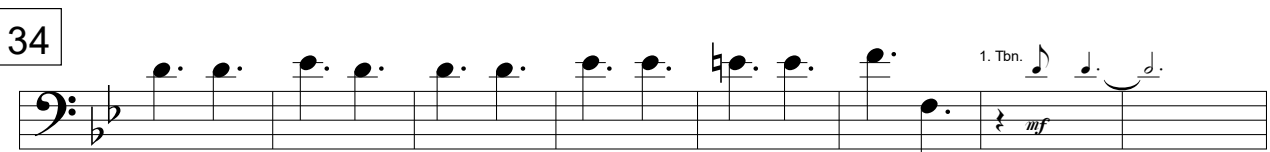
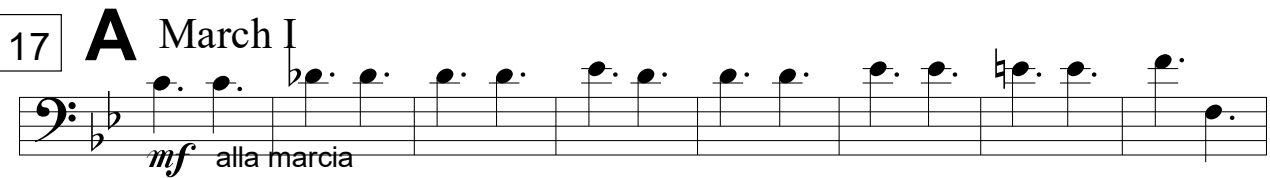
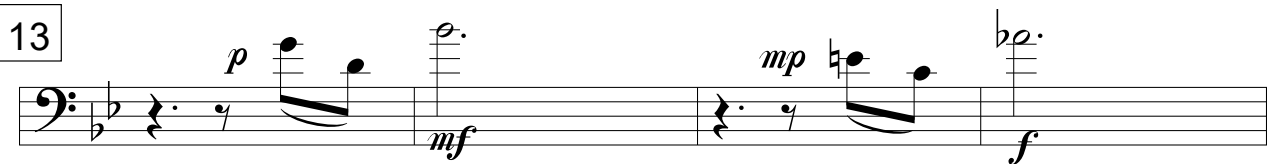
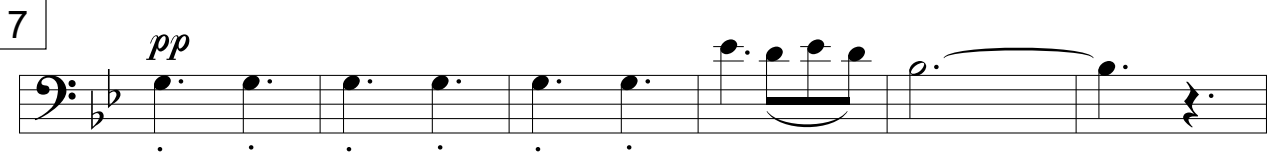
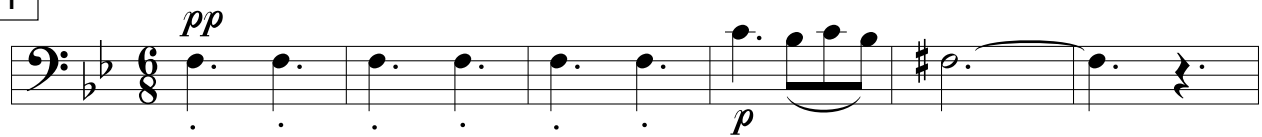
AKHYANA

2. Tenor Trombone

part 26 of 36

IVAR

1 Introduction



84

F 6 Tuba

March II

1. Tbn.

mp

95

2 1. Tbn. 2 G 6 Tuba

mp

[illegible]

115

6 11

8va

f Trumpet

Trio II

f

135 J

11

f Trumpet

149

6

mf

Trumpet

158

K

March I D.C.

166

4

mf

f

f martellato

The image shows a musical score for the bass line of 'The Rose Tree'. It begins with a four-measure rest, indicated by the number '4' above the staff. The first note is a half note G2 (one ledger line below the staff) with a mezzo-forte (*mf*) dynamic. This is followed by a half note F2 (two ledger lines below the staff) and a half note E2 (three ledger lines below the staff), both with a forte (*f*) dynamic. The final measure contains two eighth notes, D2 (three ledger lines below the staff) and C2 (four ledger lines below the staff), both with a forte (*f*) dynamic and a 'martellato' (hammered) articulation. The key signature has one flat (B-flat), and the time signature is 4/4.

[illegible]